



PRESS RELEASE

DESIGN SEPTEMBER

FINN JUHL DESIGN FOR ART COLLECTORS x PETER DEPELCHIN

13 – 30 SEPTEMBER 2022

POP-UP EXHIBITION BY DESIGNHUS AT HUSK GALLERY



'48 Sofa Bench' and 'Art Collector's Table' designed in 1948 by Finn Juhl ©House of Finn Juhl

Husk Gallery – a contemporary art gallery based in the Rivoli Buiding in Brussels – honours the Danish designer Finn Juhl (1912-1989) during its ongoing solo exhibition with Belgian artist Peter Depelchin (b 1985). On the occasion of Brussels Design September 2022 the exhibition highlights Finn Juhl's affinity for contemporary art and interior design project for art collectors as presented in 1948. With the support of House of Finn Juhl and Designhus re-editions of Finn Juhl's iconic pieces are displayed in a spatial dialogue with the artworks by Peter Depelchin.

Finn Juhl is remembered as an innovative furniture designer, who challenged traditional thinking and production methods. He designed mainly solid wooden furniture with a seductive vocabulary of form and superlative craftsmanship. In the 1950s Finn Juhl acted as an international ambassador of Danish design. As a tribute to this furniture architect and designer, Husk Gallery presents a fine selection of Finn Juhl's furniture design pieces reflecting the contemporary art of his time, and highlights "A Study for an Art Collector, Juhl's interior design project for art collectors presented in 1948.



Finn Juhl's watercolour drawing of his interior design 'Study for an art collector' in 1948 ©Photo: Pernille Klemp

The exhibition is launched in collaboration with Onecollection, the Danish company who has the unique right to reproduce and sell his furniture under the label **'House of Finn Juhl'** and **Designhus** - the hotspot for Nordic design in Tervuren. On the occasion of **'Brussels Design September 2022'** Designhus will present a fine selection of Finn Juhl's furniture design in Brussels and Tervuren. As part of the exhibition, the visitors are invited to sense the tactile aspect of the exquisite furniture by touching them and sitting in them. Both at Husk Gallery's space in Rivoli Brussels (13 > 30 Sept) and at Designhus in Tervuren (4 > 30 Oct), design pieces by Finn Juhl are presented with the refined drawings by Belgian artist Peter Depelchin.



Left: 'Chieftain Chair' by Finn Juhl, designed in 1949 ©House of Finn Juhl

Right: 'Libation' by Peter Depelchin, 2021, blue and red pencil and pencil on CIAT paper, 150x245 cm ©Husk Gallery and the artist

About the designer Finn Juhl

Finn Juhl is born in 1912 in Copenhagen. He wants to study art history, but his father doesn't approve it. At the age of 18, Finn Juhl starts studying architecture at the Royal Danish Academy of Fine Arts. Despite his architectural education, Finn Juhl designed few houses. It is especially as a designer of furniture and interiors that he becomes known. In the period 1937-1957, he designs annually for the Danish Cabinetmakers' Guild exhibition in close collaboration with Niels Vodder, the master cabinetmaker. Because Finn Juhl was trained as an architect rather than a designer, his designs were a challenge to the cabinetmakers.

It was Finn Juhl's ambition to be contemporary rather than traditional. In this way, he felt free to experiment with his designs. This philosophy resulted in the fact that his designs were much too complicated for the industrial manufacturers to produce at the time in the 1930s and 40s. It was therefore to Finn Juhl's advantage that Denmark had a strong tradition of crafted cabinetmakers.

Juhl's furniture is sculpturally elegant and pieces like the Pelican Chair (1940) reflect the contemporary abstract art movements of that time. Rather than thinking in terms of practical construction, Finn Juhl had the mindset of a sculptor, when he shaped a piece of furniture. In the 1940s and 1950s, this way of working had never been seen before. He put the cabinetmaker's abilities to the test with his furniture's sculptural shapes.

In 1942, his own private house at Kratvænget in Ordrup is built. Not only the building itself, but the coherence in every detail is important. The experience of colours, light and space and the dialogue between forms in furniture, carpets, ceramics and artworks. Kratvænget became Finn Juhl's design lab. He began designing solid wood chairs, tables and sofas which gave his international acclaim. The number 45 chair (1945) and the Chieftain's Chair (1949) have a distinctive sculptural skeleton which was the result of sublime craftsmanship. Juhl also developed specific constructional techniques for the use of teak, a precious wood that would lead to the so-called 'Teak style' in Danish modern furniture design.

Juhl's widespread breakthrough and international recognition started in 1950, when he is appointed to design the Trusteeship Council Chamber at the UN Headquarters in New York. In 1951 he was the first Danish furniture architect starting with the industrial production in the U.S. Finn Juhl had a formidable ability and unique talent for combining furniture, space and the artistic currents of that age, in his exhibitions and interior projects. Finn Juhl dies in 1989 in Ordrup. His second wife Hanne Wilhelm Hansen continued living in the house until her death in 2003.

In 1998 the collaboration between Onecollection and Hanne Wilhelm Hansen started regarding the relaunching of Finn Juhl's furniture. Since 2001, design furniture manufacturer Onecollection has the exclusive right to produce and sell his furniture. Directors and founders Ivan Hansen & Hans Henrik Sørensen of the Onecollection company, possess an expertise in re-launching classic furniture with respect of the designer's original concept. Today, the unique collection is comprised of more than 50 classical masterpieces, that are produced with the utmost respect for the legacy and live up to the highest standards of quality.

About the artist Peter Depelchin

Peter Depelchin (b 1985, Ostend, Belgium) lives and works in Brussels. He has been very busy on the national and international art scene, with residencies in The Netherlands (Stichting IK, Vlissingen 2008-2009), in Italy (Academia Belgica, Rome 2014-2015), in the USA (Residency Unlimited, New York, 2015-2016) and currently in Belgium (tamat, Tournai 2022). Each of these residencies led to exhibitions in The Netherlands (Neugebau, Pieter Janszoon Saenredam project, Gegoten Lood), in Rome (MAXXI), in New York (Incube Arts, Offspace, Arts on Site, Outside in, Brilliant Champions Gallery) and Tournai (TAMAT). He was invited to exhibit in Brussels (Kasteel van Gaasbeek, La Vallée) and in London (Young Masters). Furthermore he was declared Drawing and Contemporary art laureate in several national art prizes, among which Input-Output (Bruges, 2007), Grote Prijs Ernest Albert voor Tekenkunst (Mechelen, 2016) and Prix Elisabeth Burdot (2022). In 2021 the artist's monograph 'Peter Depelchin 2014-2021' was published by Husk Gallery. Currently, Peter Depelchin is preparing his upcoming major solo show in 2023 at Musée Rops and Chateau Thozée in Namur, Belgium.

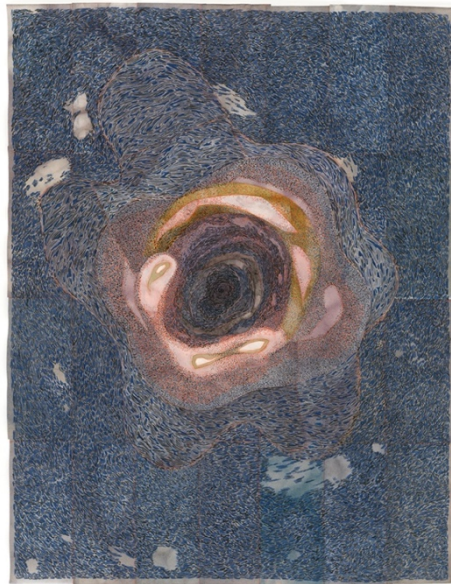
Download Peter Depelchin's [full CV here](#)

About Husk Gallery and Designhus

Husk Gallery is a contemporary art gallery, since 2019 based in Rivoli Brussels. Ingrid Van Hecke (art historian, KU Leuven) is the founder and gallery director. Husk Gallery aims to promote new and strong ideas by highly talented artists in Belgium and abroad through exhibitions and publications.

Designhus is a design store located in the centre of Tervuren since 2012, specialized in relaunches of modern Scandinavian furniture design and contemporary nordic design. The collection contains all iconic pieces of the Scandinavian masters of midcentury design: Alvar Aalto, Hans Wegner, Arne Jacobsen, Poul Henningsen, Poul Kjaerholm and Finn Juhl, as well as a selection of the new generation Nordic designers.

As an exclusive dealer of the furniture from the 'House of Finn Juhl' – produced by Onecollection, Designhus and its partner Husk Gallery want to highlight and share the legacy of Finn Juhl. The Finn Juhl exhibition is curated by Kris Van Nieuwenhove and Ingrid Van Hecke, the driving forces behind Designhus and Husk Gallery, a couple with a passion for Scandinavian design and contemporary art.



Left: 'Pelican Chair' by Finn Juhl, designed in 1940 ©House of Finn Juhl

Right: 'Maëlstrom' by Peter Depelchin, 2022, colour pencil and Chinese ink on collage, 95x75 cm ©Husk Gallery and the artist



The exhibition **'Finn Juhl Design for Art Collectors'** at Husk Gallery takes place from **13 to 30 September 2022**.

Opening Exhibition

Monday 12 September 2022 from 5 pm to 7.30 pm

Opening hours during exhibition

Thursday, Friday and Saturday from 2 to 6 pm
or by appointment

The art exhibition *'Mystic Heated Wine beyond the Event Horizon'* with Peter Depelchin at Husk Gallery takes place from 4 September to 22 October 2022.

Address Husk Gallery

Rivoli Building ground floor, Chaussée de Waterloo 690 #12, 1180 Brussels

For further inquiries:

Contact Ingrid Van Hecke – Husk Gallery Director

Mail info@huskgallery.com

Tel. +32 478 52 16 46

Website www.huskgallery.com



The exhibition about Finn Juhl continues at **Designhus Tervuren** from **4 to 30 October 2022**.

Opening hours

Tuesday to Saturday from 10 am to 6 pm & Sunday from 2 to 6 pm

Address Designhus

Brusselsesteenweg 4F, 3080 Tervuren

Contact Kris Van Nieuwenhove – Manager Designhus

Mail kris@designhus.be

Tel. +32 2 307 50 80

Website www.designhus.be

Facebook: @huskartgallery @designhus

Instagram: @huskgallery @designhus

#designseptember #finnjuhl #peterdepelchin #huskgallery #designhus

Interesting links

HOUSE OF
FINN JUHL

